



Presented by



Find the Art Fragment Challenge

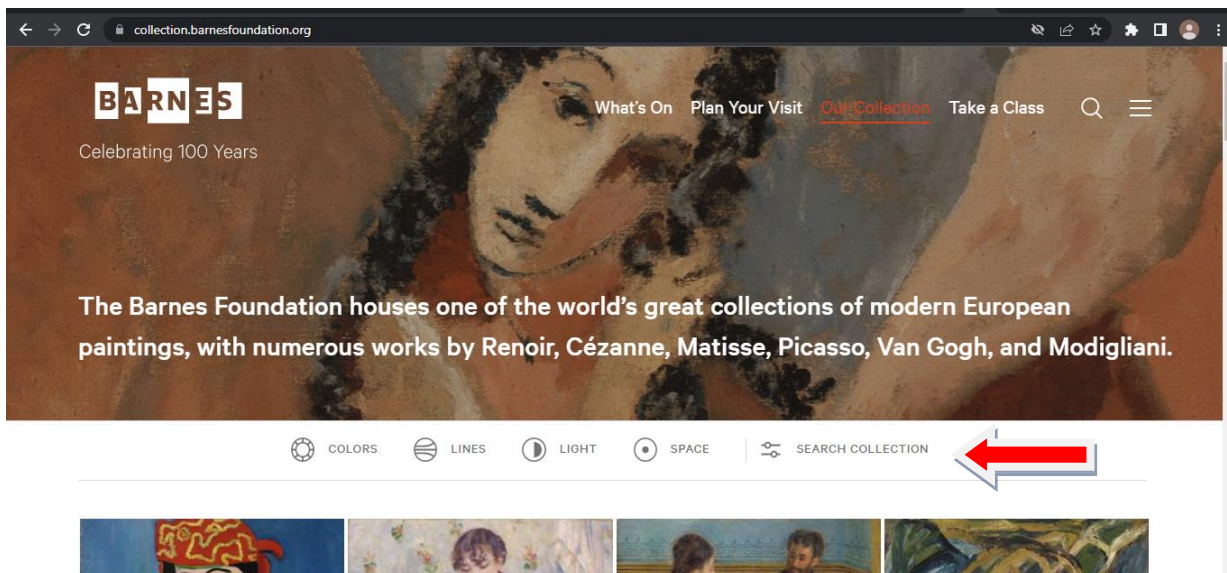
Restating from blog post that the museum has a large collection of “nudes” that are distributed through the building. There is basically no way to physical or virtually avoid their presence.

Here are a few tips to help you in your search.

Head to the [Barnes Foundation](https://www.barnesfoundation.org) website. On the top right click on “Our Collection.”



Look for “Search Collection” on the right.



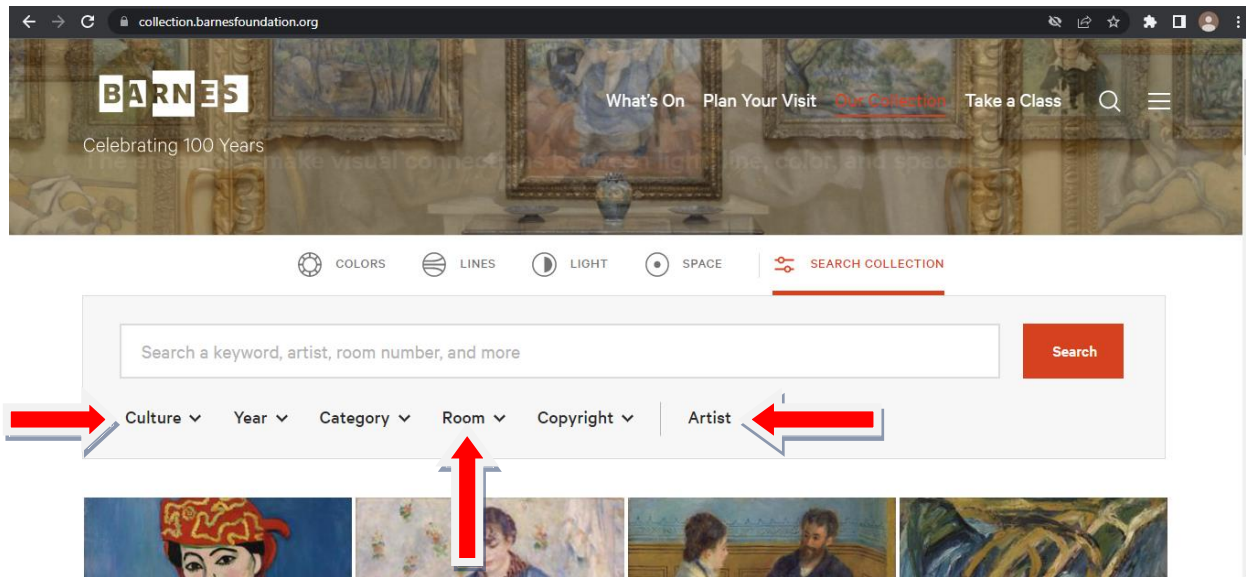


Presented by



The page will open a new section that presents several search options. Note that once you select one option it remains checked unless you clear it. Clearing your last selection will save you a bit of time.

Note: You have the ability to zoom in tightly on all the art pieces. This will come in handy as you try to find the more granular fragments.



As you will see not all artwork has a wall location. This is by design to encourage participants to explore the collection a little more.

If you complete the challenge or even if you don't, please leave a comment on the Teshley Solutions blog, the Education Unpacked YouTube channel video (or both).

Suggested comments:

Found all! | Found – 5. | Too easy! | Too hard! | Just right!

This will help us know if adjustments are needed for the next challenge.

Once again, please do not provide any additional information about the artwork. Let the newcomers start fresh. We want everyone to have the same experience.

Answers will be revealed one week from the start of the challenge.



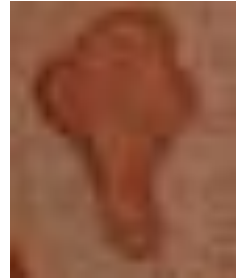
Presented by

Here are the fragments for the 08/20/22 challenge.

Happy hunting!



Lower Lobby



Room 16, North Wall



Room 13, North Wall



Room 16



Room 8, West Wall



Room 11



2nd Floor Balcony



Presented by



Room 6



Room 12



Room 5, East Wall